

# Sample suspension instructions for

Rovers Evalyn® Brush

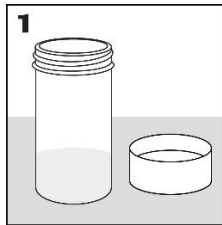


Sample handling instructions for self-collected sample using Rovers Evalyn® Brush for testing with the **cobas**® 4800 HPV Test or **cobas**® HPV.

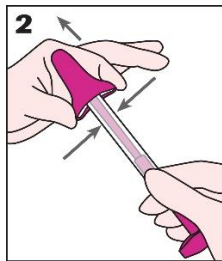
**Self-collected sample must be placed into medium after sample has been collected.**

- **Read all instructions before starting sample suspension.**
- For sample collection, follow the collection device manufacturer's Instructions for use.
- Once the sample has been collected, continue with the following instructions to preserve the sample:

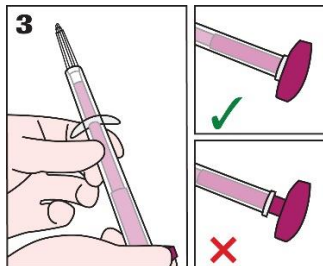
## Handle the collected sample with care



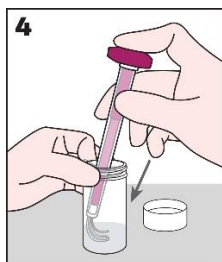
**1. Carefully** uncap the vial containing medium and place it on a stable, flat surface.



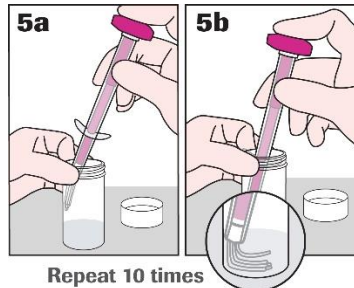
**2. Remove** the pink cap from the Evalyn brush **taking care not to touch the exposed end.**



**3. Press** the pink plunger down until it clicks into place to expose the white brush. **Take care to keep the exposed brush from touching anything** (e.g., fingers, surfaces).



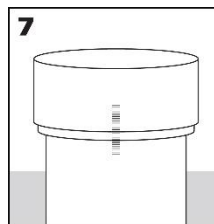
**4. Hold** the vial with one hand then with the other hand place the white brush into the vial so that the **bristles are fully immersed in the medium and the wings are past the opening of the vial.**



**5. Holding** onto the vial, vigorously plunge the brush, **smashing** the white brush **against the bottom and interior wall** of the vial **10 times to maximize sample release.** Be careful not to splash.



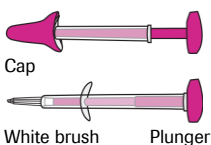
**6. Remove** the white brush by carefully drawing the brush up along the inner wall of the primary vial until the brush is no longer submerged in the medium. **Hold the brush against the inner vial wall to drain fluid** off the brush. Place the Evalyn brush back inside the packaging and discard.



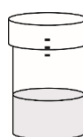
**7. Re-cap** the vial and tighten until **the lines on the cap and vial meet or slightly overlap** to prevent leakage. Store upright.

**8. The sample** can now be processed with the **cobas**® 4800 HPV Test or **cobas**® HPV.

## Glossary



**Evalyn Brush:** The self collection device used to collect sample.



**Vial:** A container which contains 20 mL of clear solution. The specimen you collect will need to be transferred into this container and this container will be sent to the lab for processing.

**Medium:** What the liquid that comes in the vial is called.

# Sample suspension instructions for

Rovers Evalyn® Brush



## Trademarks and Patents

See <http://www.roche-diagnostics.us/patents>

## Copyright

See <https://diagnostics.roche.com/us/en/about-us/patents>

## Support

If you have any questions or problems, contact your healthcare worker.

## Manufacturer and Importer



Roche Molecular Systems, Inc.  
1080 US Highway 202 South  
Branchburg, NJ 08876 USA  
[www.roche.com](http://www.roche.com)

Made in USA



Roche Diagnostics GmbH  
Sandhofer Strasse 116  
68305 Mannheim, Germany



Roche Diagnostics GmbH  
Sandhofer Str. 116  
68305 Mannheim  
Germany

## Document revision

Document Revision Information	
Doc Rev. 1.0 11/2022	First Publishing.