

VENTANA CLDN18 (43-14A) RxDx Assay

REF

740-7037

08287066001

IVD

Σ 50

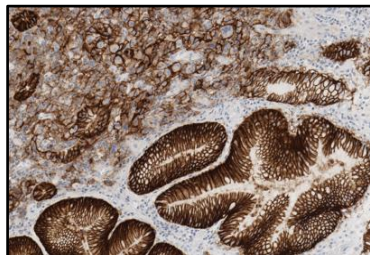


Figure 1. VENTANA CLDN18 (43-14A) RxDx Assay staining in gastric adenocarcinoma tissue.

INTENDED USE

VENTANA CLDN18 (43-14A) RxDx Assay is a qualitative immunohistochemical assay using mouse monoclonal anti-claudin 18, clone 43-14A, intended for laboratory use in the assessment of claudin 18 (CLDN18) protein in formalin-fixed, paraffin-embedded (FFPE) gastric adenocarcinoma including gastroesophageal junction (GEJ) tissue specimens by light microscopy. This assay is used with OptiView DAB IHC

Detection Kit for staining on a BenchMark ULTRA instrument.

The assay is indicated as an aid in identifying patients with gastric or GEJ adenocarcinoma who may be eligible for treatment with VYLOY™ (zolbetuximab) in accordance with the approved therapeutic product labeling. The clinical cutoff for the therapeutic product is ≥ 75% viable tumor cells (% TC) demonstrating moderate to strong membrane CLDN18 staining above background.

Test results of the VENTANA CLDN18 (43-14A) RxDx Assay should be interpreted by a qualified pathologist in conjunction with histological examination, relevant clinical information, and proper controls.

This product is intended for in vitro diagnostic (IVD) use.

SUMMARY AND EXPLANATION

VENTANA CLDN18 (43-14A) RxDx Assay is an immunohistochemistry (IHC) assay that utilizes a mouse monoclonal antibody (clone 43-14A) to detect the transmembrane CLDN18 proteins.

CLDN18 belongs to the claudin protein superfamily.¹ Claudins are tetramembrane proteins with two extracellular loops and the intracellular N- and C-termini regions in the cytoplasm.^{1,2} Functionally, claudins are integral apical cell membrane proteins that form the tight junctions, a component of cell-cell adhesion.^{1,2} In general, members of the claudin family play an essential role in maintaining a permeability barrier, regulating cell migration, and conferring polarity in epithelial cells.¹

CLDN18 is expressed as two protein isoforms: CLDN18.1 and CLDN18.2.^{1,2} Both isoforms are 261 amino acids in length; CLDN18.1 differs from CLDN18.2 in the N-terminal amino acids.³ The primary antibody used in the VENTANA CLDN18 (43-14A) RxDx Assay targets the conserved C-terminus region of the CLDN18 protein and detects both CLDN18.1 and CLDN18.2.

CLDN18.1 is predominantly expressed in normal and neoplastic lung tissue.^{1,2} CLDN18.2 is only expressed in differentiated epithelial cells of the gastric mucosa and not in other healthy tissues under normal physiological conditions.^{1,2,4} Under malignant transformation, CLDN18.2 is frequently retained in gastric cancer and its metastases, and may be expressed in other neoplastic tissues (e.g., pancreas, lung, ovary).^{1,2,4} Expression of CLDN18.2 in various solid tumors (e.g., gastric, pancreatic) has been reported to be associated with loss of cell-cell adhesion, epithelial-mesenchymal transition, and tumor progression and metastasis.^{1,2}

Clinical Significance in Gastric Adenocarcinoma including GEJ

Gastric cancer (GC) including GEJ is one of the leading causes of cancer deaths worldwide and amongst the malignancies with the highest unmet medical needs.⁵⁻⁸ Most cancers of the stomach (about 90% to 95%) are adenocarcinomas. CLDN18.2 expression is frequently noted in various solid tumors including GC/GEJ.^{1,2,4}

PRINCIPLE OF THE PROCEDURE

VENTANA CLDN18 (43-14A) RxDx Assay is a mouse monoclonal primary antibody which binds to CLDN18 protein in FFPE tissue sections. The specific antibody can be located by using OptiView DAB IHC Detection Kit (Cat. No. 760-700 / 06396500001). Refer to the OptiView DAB IHC Detection Kit method sheet (package insert) for further information.

MATERIAL PROVIDED

VENTANA CLDN18 (43-14A) RxDx Assay contains sufficient reagent for 50 tests.

One 5 mL dispenser of VENTANA CLDN18 (43-14A) RxDx Assay contains approximately 15 µg of mouse monoclonal antibody.

The antibody is diluted in Tris buffered saline, EDTA, Brij-35 and 0.05% sodium azide, a preservative. There is a trace amount of bovine serum albumin, carrier protein.

Specific antibody concentration is approximately 3 µg/mL.

VENTANA CLDN18 (43-14A) RxDx Assay is a mouse monoclonal antibody IgG2b produced as cell culture supernatant.

Refer to the appropriate VENTANA detection kit method sheet (package insert) for detailed descriptions of: Principle of the Procedure, Material and Methods, Specimen Collection and Preparation for Analysis, Quality Control Procedures, Troubleshooting, Interpretation of Results, and Limitations.

MATERIALS REQUIRED BUT NOT PROVIDED

Staining reagents, such as VENTANA detection kits and ancillary components, including negative and positive tissue control slides, are not provided.

Not all products listed in the method sheet (package insert) may be available in all geographies. Consult your local support representative.

The following reagents and materials may be required for staining but are not provided:

1. Human gastric tissue with intestinal metaplasia for use as control tissue
2. Negative Control (Monoclonal) (Cat. No. 760-2014 / 05266670001)
3. Microscope slides, positively charged
4. OptiView DAB IHC Detection Kit (Cat. No. 760-700 / 06396500001)
5. EZ Prep Concentrate (10X) (Cat. No. 950-102 / 05279771001)
6. Reaction Buffer Concentrate (10X) (Cat. No. 950-300 / 05353955001)
7. ULTRA LCS (Predilute) (Cat. No. 650-210 / 05424534001)
8. ULTRA Cell Conditioning Solution (ULTRA CC1) (Cat. No. 950-224 / 05424569001)
9. Hematoxylin II counterstain (Cat. No. 790-2208 / 05277965001)
10. Bluing Reagent (Cat. No. 760-2037 / 05266769001)
11. General purpose laboratory equipment
12. BenchMark ULTRA Instrument
13. Permanent mounting medium
14. Cover glass
15. Automated coverslipper
16. Light Microscope

STORAGE AND STABILITY

Upon receipt and when not in use, store at 2-8°C. Do not freeze.

To ensure proper reagent delivery and the stability of the antibody, replace the dispenser cap after every use and immediately place the dispenser in the refrigerator in an upright position.

Every antibody dispenser is expiration dated. When properly stored, the reagent is stable to the date indicated on the label. Do not use reagent beyond the expiration date.

SPECIMEN PREPARATION

Routinely processed FFPE tissues are suitable for use with this primary antibody when used with VENTANA detection kits and BenchMark ULTRA instruments. The recommended tissue fixative is 10% neutral buffered formalin for 24 hours with a range from 6 to 48 hours fixation time.⁹ It is recommended that slides are stained immediately, as antigenicity of cut tissue sections may diminish over time.

Sections approximately 4 µm thick with a range from 3 µm to 5 µm should be mounted onto positively charged slides.

Ask your Roche representative for a copy of "Recommended Slide Storage and Handling" for more information.

It is recommended that positive and negative controls be run simultaneously with unknown specimens.

WARNINGS AND PRECAUTIONS

1. For in vitro diagnostic (IVD) use.
2. For professional use only.
3. Do not use beyond the specified number of tests.
4. Positively charged slides may be susceptible to environmental stresses resulting in inappropriate staining. Ask your Roche representative for more information on how to use these types of slides.
5. Materials of human or animal origin should be handled as biohazardous materials and disposed of with proper precautions. In the event of exposure, the health directives of the responsible authorities should be followed.^{10,11}
6. Avoid contact of reagents with eyes and mucous membranes. If reagents come in contact with sensitive areas, wash with copious amounts of water.
7. Avoid microbial contamination of reagents as it may cause incorrect results.
8. For further information on the use of this device, refer to the BenchMark ULTRA instrument User Guide, and instructions for use of all necessary components located at navifyportal.roche.com.
9. Consult local and/or state authorities with regard to the recommended method of disposal.
10. Product safety labeling primarily follows EU GHS guidance. Safety data sheet is available for professional user on request.
11. To report suspected serious incidents related to this device, contact the local Roche representative and the competent authority of the Member State or Country in which the user is established.

STAINING PROCEDURE

VENTANA primary antibodies have been developed for use on BenchMark ULTRA instruments in combination with VENTANA detection kits and accessories. Refer to Table 1 for recommended staining protocols.

This antibody has been optimized for specific incubation times but the user must verify results obtained with this reagent.

The parameters for the automated procedures can be displayed, printed and edited according to the procedure in the instrument User Guide. Refer to the appropriate VENTANA detection kit method sheet (package insert) for more details regarding immunohistochemistry staining procedures.

For more details on the proper use of this device, refer to the inline dispenser method sheet (package insert) associated with P/N 740-7037.

Table 1. Recommended staining protocol for VENTANA CLDN18 (43-14A) Rx Dx Assay with OptiView DAB Detection Kit on BenchMark ULTRA instruments.

Procedure Type	Method
Staining Procedure	U CLDN18 (43-14A) Rx Dx Assay PMA
Baking ^a	Not selected
Deparaffinization	4 minutes (default), 72°C
Cell Conditioning (Antigen Unmasking)	ULTRA CC1, 64 minutes, 100°C
Pre-Primary Peroxidase Inhibitor	4 minutes, 36°C
Antibody (Primary) ^a	16 minutes, 36 °C
Negative Control ^a	16 minutes, 36 °C
OptiView HQ Linker	8 minutes (default), 36°C
OptiView HRP Multimer	8 minutes (default), 36°C
Counterstain	Hematoxylin II, 8 minutes, 36°C
Post Counterstain ^a	Bluing, 4 minutes, 36°C

^a Selectable by customer

NEGATIVE REAGENT CONTROL

In addition to staining with VENTANA CLDN18 (43-14A) Rx Dx Assay, a second slide should be stained with Negative Control (Monoclonal).

POSITIVE AND NEGATIVE TISSUE CONTROL

Optimal laboratory practice is to include a positive control section on the same slide as the test tissue. This helps identify any failures applying reagents to the slide. Tissue with weak positive staining is best suited for quality control. Control tissue may contain both positive and negative staining elements and serve as both the positive and negative control. Control tissue should be fresh autopsy, biopsy, or surgical specimen, prepared or fixed as soon as possible in a manner identical to test sections.

Known positive tissue controls should be utilized only for monitoring performance of reagents and instruments, not as an aid in determining specific diagnosis of test samples. If the positive tissue controls fail to demonstrate positive staining, results of the test specimen should be considered invalid.

For VENTANA CLDN18 (43-14A) Rx Dx Assay, a system level control (SLC) that is stained in the same manner as the patient specimens should be run for each set of test conditions to monitor the proper functioning of the reagents and instrument within the staining run. SLC tissue should be fixed and processed in the same manner as the patient specimens. Tissue specimens with autolysis, degeneration or improper fixation should not be used as SLC.

Human gastric tissue with intestinal metaplasia, containing both CLDN18-positive and CLDN18-negative staining elements, can be used as positive tissue control and SLC for VENTANA CLDN18 (43-14A) Rx Dx Assay. For appropriate staining and evaluation of the human gastric tissue with intestinal metaplasia, refer to Table 2.

Table 2. VENTANA CLDN18 (43-14A) Rx Dx Assay scoring criteria for evaluation of gastric tissue with intestinal metaplasia SLC.

Staining Elements	Acceptable	Unacceptable
Positive	Presence of strong membranous CLDN18 staining in normal gastric epithelial cells AND Presence of weak to moderate membranous CLDN18 staining of epithelial cells in the areas of metaplasia	Absence of any strong membranous CLDN18 staining in normal gastric epithelial cells OR Absence of weak to moderate membranous CLDN18 staining of epithelial cells in the areas of metaplasia
Negative	Absence of CLDN18 staining in lamina propria, lymphocytes, smooth muscle, blood vessels, and peripheral nerve	Excessive non-specific background staining of lamina propria, lymphocytes, smooth muscle, blood vessels, and peripheral nerve obscuring the evaluation of CLDN18 stained cells

STAINING INTERPRETATION / EXPECTED RESULTS

The VENTANA automated immunostaining procedure causes a brown colored (DAB) reaction product to precipitate at the antigen sites localized by the VENTANA CLDN18 (43-14A) Rx Dx Assay. The cellular staining pattern for VENTANA CLDN18 (43-14A) Rx Dx Assay is membranous staining on gastric adenocarcinoma tissue including the gastroesophageal junction. Cytoplasmic staining can also be seen, but is not included in the scoring algorithm. A qualified pathologist experienced in immunohistochemical procedures must evaluate system-level controls and qualify the stained product before interpreting results.

Patient tissue must be evaluated according to the VENTANA CLDN18 (43-14A) Rx Dx Assay scoring algorithm, which is provided in Table 3. Refer to the VENTANA CLDN18 (43-14A) Rx Dx Assay Interpretation Guide 1021576EN for the indication tissue of gastric adenocarcinoma tissue including the gastroesophageal junction. Representative images are provided in the interpretation guide.

Table 3. VENTANA CLDN18 (43-14A) RxDx Assay scoring algorithm for gastric adenocarcinoma including the gastroesophageal junction.

IHC Interpretation	Staining Description
Positive	≥ 75% viable tumor cells demonstrating moderate to strong membrane CLDN18 staining
Negative	< 75% viable tumor cells demonstrating moderate to strong membrane CLDN18 staining

SPECIFIC LIMITATIONS

1. VENTANA CLDN18 (43-14A) RxDx Assay has been developed for BenchMark ULTRA instruments with the OptiView DAB IHC Detection Kit and is not approved with any other detection or instruments.
2. The primary antibody used in the VENTANA CLDN18 (43-14A) RxDx Assay targets the conserved C-terminus region of the CLDN18 protein and detects both CLDN18.1 and CLDN18.2. CLDN18.1 is either not detected or minimally expressed in gastric or GEJ adenocarcinoma tissues.^{2,13,14}
3. A patient specimen slide should be stained with Negative Control (Monoclonal) 760-2014. Other negative control reagents are not suitable for this assay.
4. This assay has not been validated for use with cytology samples or decalcified bone specimens.
5. VENTANA CLDN18 (43-14A) RxDx Assay may produce IHC staining in normal tonsil,¹² pneumocytes in normal lung tissue,^{15,16} normal gastric tissue,^{17,18} and paneth cells of normal small intestine tissue.¹⁹
6. It is not recommended to use normal tonsil as the negative control tissue for VENTANA CLDN18 (43-14A) RxDx Assay.
7. Cut-slides should be desiccated and stored at room temperature (30±5°C). Because environmental factors are known to affect antigen stability on cut slides, laboratories should validate cut slide stability within their own environment beyond 45 days, when desired.
8. Use of alcohol-formalin-acetic acid (AFA), 95% ethanol, PREFER fixatives and Zinc Formalin are not recommended for use with this assay due to observed limitation with either signal intensity or based on issue of sectioning.
9. This assay might not be registered on every instrument. Please contact your local Roche representative for more information.

PERFORMANCE CHARACTERISTICS

ANALYTICAL PERFORMANCE

Staining tests for sensitivity, specificity, and precision were conducted and the results are listed below.

Sensitivity and Specificity

Analytical sensitivity was evaluated by characterizing commercially acquired tissue samples. A cohort of 318 unique gastric or GEJ adenocarcinoma biopsy and resections tissue cases demonstrated 23.3% (74/318) positive IHC status with VENTANA CLDN18 (43-14A) RxDx Assay.

Analytical specificity was determined by staining normal and neoplastic tissues with VENTANA CLDN18 (43-14A) RxDx Assay. Staining results are listed in Table 4 and Table 5.

Table 4. Specificity of VENTANA CLDN18 (43-14A) RxDx Assay was determined by testing FFPE normal tissues.

Tissue	# positive / total cases	Tissue	# positive / total cases
Cerebrum	0/3	Myeloid (bone marrow)	0/3
Cerebellum	0/3	Lung ^b	1/3
Adrenal gland	0/3	Heart	0/3
Ovary	0/3	Pharynx	0/3
Pancreas	0/3	Esophagus	0/3
Parathyroid gland	0/3	Stomach ^c	3/3

Tissue	# positive / total cases	Tissue	# positive / total cases
Pituitary gland	0/3	Small intestine ^d	2/3
Testis	0/3	Colon	0/3
Thyroid	0/3	Appendix	0/3
Breast	0/3	Liver	0/3
Spleen	0/3	Salivary gland	0/3
Tonsil ^a	2/3	Kidney	0/3
Lymph node	0/3	Bladder	0/3
Endometrium (Uterus)	0/3	Prostate	0/3
Skeletal muscle	0/3	Cervix	0/3
Soft tissue	0/3	Skin	0/3
Peripheral nerve	0/3	Mesothelium	0/3
Thymus	0/3		

^a CLDN18 staining was present: cytoplasmic and membrane staining may be seen in a subpopulation of antigen presenting cells in the reticulated crypt epithelium¹²

^b CLDN18 staining was present: membrane staining in pneumocytes^{15,16}

^c CLDN18 staining was present: membrane staining in the gastric epithelium^{17,18}

^d CLDN18 staining was present: membrane and cytoplasmic staining in paneth cells¹⁹

Table 5. Specificity of VENTANA CLDN18 (43-14A) RxDx Assay was determined by testing a variety of FFPE neoplastic tissues.

Pathology	# positive / total cases
Glioblastoma (Cerebrum)	0/1
Meningioma (Cerebrum)	0/1
Ependymoma (Cerebellum) ^a	1/1
Oligodendroglioma (Cerebellum)	0/1
Adenoma (Adrenal gland)	0/1
Granulosa cell tumor (Ovary)	0/1
Serous adenocarcinoma (Ovary)	0/1
Teratoma (Ovary)	0/1
Adenocarcinoma (Pancreas)	0/1
Neuroendocrine neoplasm (Pancreas)	0/1
Pheochromocytoma (Adrenal gland)	0/1
Embryonal carcinoma (Testis)	0/1
Seminoma (Testis)	0/1
Papillary carcinoma (Thyroid)	0/1
Ductal carcinoma in situ (Breast)	0/1
Invasive ductal carcinoma (Breast)	0/1
Invasive lobular carcinoma (Breast)	0/1
B-cell lymphoma, NOS (Spleen)	0/1
Small cell carcinoma (Lung)	0/1
Squamous cell carcinoma (Lung)	0/1
Adenocarcinoma (Lung)	0/1
Adenocarcinoma (Esophagus)	0/1

Pathology	# positive / total cases
Squamous cell carcinoma (Esophagus)	0/1
Adenocarcinoma (Gastrointestinal)	0/2
Gastrointestinal stromal tumor (GIST) (Gastrointestinal)	0/2
Adenocarcinoma (Colon)	0/1
Adenosquamous carcinoma (Colon)	0/1
Carcinoid tumor (Appendix)	0/1
Hepatocellular carcinoma (Liver)	0/1
Cholangiocarcinoma (Liver) ^b	1/1
Clear cell carcinoma (Kidney)	0/1
Papillary adenoma (Kidney)	0/1
Urothelial carcinoma (Bladder)	0/1
Squamous cell carcinoma (Bladder)	0/1
Adenocarcinoma (Prostate)	0/2
Clear cell carcinoma (Uterus)	0/1
Endometrial carcinoma (Uterus)	0/1
Leiomyoma (Uterus)	0/1
Leiomyosarcoma (Uterus)	0/1
Squamous cell carcinoma (Cervix)	0/1
Endocervical adenocarcinoma (Cervix)	0/1
Alveolar rhabdomyosarcoma (Striated muscle)	0/1
Melanoma (Skin)	0/1
Squamous cell carcinoma (Skin)	0/1
Basal cell carcinoma (Skin)	0/1
Follicular carcinoma (Thyroid)	0/1
Schwannoma (Nerve)	0/1
Neurofibrosarcoma (Nerve)	0/1
Mesothelioma (Mesothelium)	0/1
Pleural solitary fibrous tumor (Mesothelium)	0/1
Follicular lymphoma (Lymph node)	0/1
Hodgkin lymphoma (Lymph node)	0/1
Anaplastic large cell lymphoma (Lymph node)	0/1
Warthin tumor (Salivary gland)	0/1
Pleomorphic adenoma (Salivary gland)	0/1
Squamous cell carcinoma (Head and neck)	0/1
Adenocarcinoma (Head and neck)	0/1
Multiple myeloma (Bone)	0/1
Liposarcoma (Soft tissue)	0/1
Angiosarcoma (Soft tissue)	0/1
Myxoma (Heart)	0/1

^a CLDN18 staining was present as cytoplasmic staining in rare tumor cells

^b CLDN18 staining was present as membrane and rare cytoplasmic staining in scattered tumor cells²⁰

Precision Study of Slide Evaluation

Precision of Slide Evaluation was determined by testing multiple pathologists who were trained with the assay scoring algorithm for their within-reader and between-reader reproducibility, using 100 gastric adenocarcinoma including GEJ tissue cases that encompassed CLDN18 IHC staining status range of positive and negative on a BenchMark ULTRA instrument. Results are listed in Table 6 and Table 7.

Table 6. Within-reader precision across three readers.

Agreement Rate	n/N (Sample)	Percentage (95% Confidence Interval) ^a
Average Positive Agreement	296/300	98.7% (97.3%, 99.7%)
Average Negative Agreement	296/300	98.7% (97.3%, 99.7%)
Overall Percent Agreement	296/300	98.7% (97.3%, 99.7%)

^a 2-sided 95% confidence interval calculated using the percentile bootstrap method.

Table 7. Between-reader precision across three readers.

Agreement Rate	n/N (Sample)	Percentage (95% Confidence Interval) ^a
Average Positive Agreement	296/300	98.7% (96.6%, 100.0%)
Average Negative Agreement	296/300	98.7% (96.6%, 100.0%)
Overall Percent Agreement	296/300	98.7% (96.7%, 100.0%)

^a 2-sided 95% confidence interval calculated using the percentile bootstrap method.

Precision Study of Antibody Lots

VENTANA CLDN18 (43-14A) Rx/Dx Assay antibody lot-to-lot reproducibility was tested with 24 gastric adenocarcinoma including GEJ tissue cases that encompassed CLDN18 IHC staining status range of positive and negative, using three antibody lots on a BenchMark ULTRA instrument. Results are listed in Table 8.

Table 8. Agreement rate between-antibody lots.

Agreement Rate	n/N (Sample)	Percentage (95% Confidence Interval) ^a
Positive Percent Agreement	72/72	100.0% (94.9%, 100.0%)
Negative Percent Agreement	72/72	100.0% (94.9%, 100.0%)
Overall Percent Agreement	144/144	100.0% (97.4%, 100.0%)

^a 2-sided 95% confidence interval calculated using the Wilson Score method.

Precision Study of OptiView Detection System Lots

Three lots of OptiView DAB IHC Detection Kit lot-to-lot reproducibility was tested with 24 gastric adenocarcinoma including GEJ tissue cases that encompassed CLDN18 IHC staining status range of positive and negative, using VENTANA CLDN18 (43-14A) Rx/Dx Assay antibody on a BenchMark ULTRA instrument. Results are listed in Table 9.

Table 9. Agreement rate between-detection kit lots.

Agreement Rate	n/N (Sample)	Percentage (95% Confidence Interval) ^a
Positive Percent Agreement	72/72	100.0% (94.9%, 100.0%)
Negative Percent Agreement	72/72	100.0% (94.9%, 100.0%)
Overall Percent Agreement	144/144	100.0% (97.4%, 100.0%)

^a 2-sided 95% confidence interval calculated using the Wilson Score method.

Precision Study of BenchMark ULTRA Instruments

Between BenchMark ULTRA instrument reproducibility was tested with 24 gastric adenocarcinoma including GEJ tissue cases that encompassed CLDN18 IHC staining status range of positive and negative on three BenchMark ULTRA instruments. Results are listed in Table 10.

Table 10. Agreement rate between BenchMark ULTRA instruments.

Agreement Rate	n/N (Sample)	Percentage (95% Confidence Interval) ^a
Positive Percent Agreement	72/72	100.0% (94.9%, 100.0%)
Negative Percent Agreement	72/72	100.0% (94.9%, 100.0%)
Overall Percent Agreement	144/144	100.0% (97.4%, 100.0%)

^a 2-sided 95% confidence interval calculated using the Wilson Score method.

Precision Study of Between Staining Days

Between-day reproducibility was tested with 24 gastric adenocarcinoma including GEJ tissue cases that encompassed CLDN18 IHC staining status range of positive and negative on a BenchMark ULTRA instrument. Results are listed in Table 11.

Table 11. Agreement rate between-days.

Agreement Rate	n/N (Sample)	Percentage (95% Confidence Interval) ^a
Positive Percent Agreement	72/72	100.0% (94.9%, 100.0%)
Negative Percent Agreement	72/72	100.0% (94.9%, 100.0%)
Overall Percent Agreement	144/144	100.0% (97.4%, 100.0%)

^a 2-sided 95% confidence interval calculated using the Wilson Score method.

Precision Study of Within Staining Run

Within-run reproducibility evaluated the duplicate slides from the precision studies of 24 gastric adenocarcinoma including GEJ tissue cases that encompassed CLDN18 IHC staining status range of positive and negative. Results are listed in Table 12.

Table 12. Agreement rate within-runs.

Agreement Rate	n/N (Sample Pairs)	Percentage (95% Confidence Interval) ^a
Positive Percent Agreement	108/108	100.0% (96.6%, 100.0%)
Negative Percent Agreement	108/108	100.0% (96.6%, 100.0%)
Overall Percent Agreement	216/216	100.0% (98.3%, 100.0%)

^a 2-sided 95% confidence interval calculated using the Wilson Score method.

Tissue Thickness

Tissue thickness was evaluated with 5 gastric adenocarcinoma including GEJ tissue cases that encompassed CLDN18 IHC staining status range of positive and negative and 3 total gastric tissue with intestinal metaplasia tissue cases, using VENTANA CLDN18 (43-14A) RxDx Assay antibody on a BenchMark ULTRA instrument. The recommended section thickness range is 3-5 µm for the VENTANA CLDN18 (43-14A) RxDx Assay.

Inter-Laboratory Reproducibility

An inter-laboratory reproducibility study for VENTANA CLDN18 (43-14A) RxDx Assay was conducted to demonstrate reproducibility of the assay in determining CLDN18 IHC status in gastric adenocarcinoma including GEJ cancer cases that were stained and scored at three external sites (laboratories) A, B, C. This study analyzed 28 gastric adenocarcinoma including GEJ tissue specimens encompassed of 14 CLDN18 positive and 14 CLDN18 negative cases. Each site stained five sets of specimens from the 28 cases on five non-consecutive days over a period of at least 20 days. Two qualified pathologists at each site independently evaluated stained slides to assign a CLDN18 IHC status at the 75% cut-off. Results from sites A, B, and C are listed in Table 13.

Slides stained at sites A, B, and C were distributed to three additional external sites (X, Y, Z). Each site received five sets of stained slides from the 28 cases that were previously stained on five non-consecutive days over a period of 20 days. Two qualified pathologists at each site independently evaluated the stained slides to assign a CLDN18 IHC status at the 75% cut-off. Results from sites X, Y, and Z are also listed in Table 13.

Table 13. Inter-laboratory reproducibility.

Reproducibility Tested	Agreement Rate	Sites A, B, C		Sites X, Y, Z	
		n/N (Sample)	Percentage (95% CI) ^b	n/N (Sample)	Percentage (95% CI) ^b
Overall ^a	Positive Percent Agreement	380/419	90.7% (85.5%, 95.9%)	408/420	97.1% (94.4%, 99.5%)
	Negative Percent Agreement	386/419	92.1% (86.5%, 97.8%)	390/420	92.9% (86.7%, 97.4%)
	Overall Percent Agreement	766/838	91.4% (88.2%, 94.2%)	798/840	95.0% (91.7%, 97.7%)
Between-Site	Average Positive Agreement	7128/8241	86.5% (80.9%, 91.2%)	8014/8760	91.5% (85.9%, 96.3%)
	Average Negative Agreement	7366/8479	86.9% (81.7%, 91.0%)	7294/8040	90.7% (84.4%, 95.6%)
	Overall Percent Agreement	7247/8360	86.7% (81.4%, 91.0%)	7654/8400	91.1% (85.3%, 96.0%)
Between-Reader	Average Positive Agreement	344/412	83.5% (76.8%, 89.2%)	416/438	95.0% (92.3%, 97.6%)
	Average Negative Agreement	356/424	84.0% (78.5%, 88.7%)	380/402	94.5% (91.6%, 97.2%)
	Overall Percent Agreement	350/418	83.7% (77.9%, 88.9%)	398/420	94.8% (91.9%, 97.4%)
Between-Day	Average Positive Agreement	1562/1648	94.8% (92.3%, 96.8%)	1698/1752	96.9% (94.9%, 98.7%)
	Average Negative Agreement	1610/1696	94.9% (92.8%, 96.7%)	1554/1608	96.6% (94.7%, 98.4%)
	Overall Percent Agreement	1586/1672	94.9% (92.7%, 96.8%)	1626/1680	96.8% (94.9%, 98.6%)
Within-Site	Positive Percent Agreement	386/429	90.0% (84.7%, 95.2%)	433/450	96.2% (93.8%, 98.4%)
	Negative Percent Agreement	382/409	93.4% (88.9%, 99.4%)	385/390	98.7% (97.7%, 99.7%)
	Overall Percent Agreement	768/838	91.6% (88.7%, 94.3%)	818/840	97.4% (96.0%, 98.7%)
Within-Reader	Positive Percent Agreement	399/409	97.6% (96.1%, 98.9%)	431/440	98.0% (96.5%, 99.1%)
	Negative Percent Agreement	415/429	96.7% (94.6%, 98.6%)	393/400	98.3% (96.9%, 99.5%)
	Overall Percent Agreement	814/838	97.1% (95.9%, 98.2%)	824/840	98.1% (97.0%, 99.2%)

^a Agreement of study results with the case-level modal CLDN18 IHC status

^b 2-sided 95% confidence interval calculated using the percentile bootstrap method from 2000 bootstrap samples.

CLINICAL PERFORMANCE

Clinical Outcome Study - SPOTLIGHT

The clinical performance of VENTANA CLDN18 (43-14A) RxDx Assay was evaluated in SPOTLIGHT (NCT03504397), a multicenter, double-blind, randomized study evaluating the efficacy and safety of VYLOY (zolbetuximab) in combination with mFOLFOX6 (leucovorin [folinic acid], fluorouracil [5-FU], and oxaliplatin) in 565 patients with locally advanced unresectable or metastatic HER2-negative gastric or GEJ adenocarcinoma whose tumors were CLDN18.2 positive.

CLDN18.2 positivity (defined as ≥75% of viable tumor cells demonstrating moderate to strong membranous CLDN18 staining) was determined by immunohistochemistry on gastric or GEJ tumor tissue specimens from all patients with the VENTANA CLDN18 (43-14A) RxDx Assay performed in a central laboratory. Patients were excluded from the study if they had complete or partial gastric outlet syndrome or history of central nervous system metastases.

Patients were randomized 1:1 to receive VYLOY in combination with mFOLFOX6 (n=283) or placebo in combination with mFOLFOX6 (n=282).

The major efficacy outcome measure was progression free survival (PFS) as assessed per RECIST v1.1 by independent review committee (IRC). Additional efficacy outcome measures were overall survival (OS), objective response rate (ORR), and duration of response (DOR) as assessed per RECIST v1.1 by IRC.

The study population characteristics were median age of 61 (range: 20-86); 62% were male; 48% were White, 34% Asian, 3.0% American Indian or Alaska, 1.2% Black or African American, 4.1% other racial groups, and race in 9% was unknown or missing; 78% non-Hispanic or Latino, 13% Hispanic or Latino, and ethnicity in 10% was missing; 98% had ECOG performance status (PS) of 0 or 1; 76% had gastric cancer, 24% had GEJ cancer; 84% were metastatic, 16% were locally advanced; and 29% had undergone prior

gastrectomy. Subsequent anticancer therapy was received by 135 (48%) patients in the VYLOY in combination with mFOLFOX6 arm and 148 (53%) patients in the placebo in combination with mFOLFOX6 arm. VYLOY in combination with mFOLFOX6 demonstrated a statistically significant improvement in PFS and OS compared with placebo in combination with mFOLFOX6 (Table 14).

Table 14. Efficacy Results in SPOTLIGHT

Endpoint	VYLOY with mFOLFOX6 n = 283	Placebo with mFOLFOX6 n = 282
Progression-Free Survival (PFS)		
Number (%) of patients with events	146 (51.6)	167 (59.2)
Median PFS ^a (95% CI)	10.6 (8.9, 12.5)	8.7 (8.2, 10.3)
HR ^{b,c} (95% CI)	0.751 (0.598, 0.942)	
P-value ^{b,d}	0.0066	
Overall Survival (OS)		
Number (%) of patients with events	149 (52.7)	177 (62.8)
Median OS ^a (95% CI)	18.2 (16.4, 22.9)	15.5 (13.5, 16.5)
HR ^{b,c} (95% CI)	0.750 (0.601, 0.936)	
P-value ^{b,d}	0.0053	

Endpoint	VYLOY with mFOLFOX6 n = 283	Placebo with mFOLFOX6 n = 282
Objective Response Rate (CR + PR) ^e		
ORR (%) (95% CI) ^f	40.3 (34.5, 46.3)	39.7 (34.0, 45.7)
Complete response rate (%)	14 (4.9)	8 (2.8)
Partial response rate (%)	100 (35.3)	104 (36.9)
Duration of Response	N=114	N=112
Median in months (95% CI)	10.3 (8.3, 10.9)	10.5 (7.7, 13.3)

Clinical cut-off date: 09-Sep-2022

CI = confidence interval, CR = complete response, HR = hazard ratio, PR = partial response

^a Months, based on Kaplan-Meier estimate.

^b Stratification factors were region, number of metastatic sites, and prior gastrectomy from IRT.

^c Based on a stratified Cox proportional hazards model.

^d Based on a 1-sided stratified log-rank test.

^e Based on confirmed response.

^f Based on binomial distribution (Clopper-Pearson).

Clinical Outcome Study – GLOW

The clinical performance of VENTANA CLDN18 (43-14A) RxDx Assay was evaluated in GLOW (NCT03653507), a multicenter, double-blind, randomized study evaluating the efficacy and safety of VYLOY (zolbetuximab) in combination with CAPOX (capecitabine and oxaliplatin) in 507 patients with locally advanced unresectable or metastatic HER2-negative gastric or GEJ adenocarcinoma whose tumors were CLDN18.2 positive.

CLDN18.2 positivity (defined as ≥75% of viable tumor cells demonstrating moderate to strong membranous CLDN18 staining) was determined by immunohistochemistry on gastric or GEJ tumor tissue specimens from all patients with the VENTANA CLDN18 (43-14A) RxDx Assay performed in a central laboratory. Patients were excluded from the study if they had a complete or partial gastric outlet syndrome or history of central nervous system metastases.

Patients were randomized 1:1 to receive VYLOY in combination with CAPOX (n=254) or placebo in combination with CAPOX (n=253).

The major efficacy outcome measure was PFS as assessed per RECIST v1.1 by IRC. Additional efficacy outcome measures were OS, ORR, and DOR as assessed per RECIST v1.1 by IRC.

The study population characteristics were median age of 60 years (range: 21-83); 62% were male; 62% were Asian, 36% were White, and race in 1.4% was missing; 95% non-Hispanic or Latino, 3.4% were Hispanic or Latino, and ethnicity in 1.4% was missing; 99% had ECOG performance status (PS) of 0 or 1; 84% had primary gastric cancer, 16% had primary gastroesophageal adenocarcinoma; 88% were metastatic, 12% were locally advanced; and 27% had undergone prior gastrectomy. VYLOY in combination with CAPOX demonstrated a statistically significant improvement in PFS and OS compared with placebo in combination with CAPOX (Table 15).

Table 15. Efficacy Results in GLOW

Endpoint	VYLOY with CAPOX n = 254	Placebo with CAPOX n = 253
Progression-Free Survival (PFS)		
Number (%) of patients with events	137 (53.9)	172 (68.0)
Median PFS ^a (95% CI)	8.2 (7.5, 8.8)	6.8 (6.1, 8.1)
HR ^{b,c} (95% CI)	0.687 (0.544, 0.866)	
P-value ^{b,d}	0.0007	
Overall Survival (OS)		
Number (%) of patients with events	144 (56.7)	174 (68.8)
Median OS ^a (95% CI)	14.4 (12.3, 16.5)	12.2 (10.3, 13.7)
HR ^{b,c} (95% CI)	0.771 (0.615, 0.965)	
P-value ^{b,d}	0.0118	
Objective Response Rate (CR + PR) ^e		
ORR (%) (95% CI) ^f	32.3 (26.6, 38.4)	31.2 (25.6, 37.3)
Complete response rate (%)	6 (2.4)	2 (0.8)
Partial response rate (%)	76 (29.9)	77 (30.4)
Duration of Response	N=82	N=79
Median in months (95% CI)	8.3 (6.3, 11.4)	6.2 (6.0, 7.6)

Clinical cut-off date: 07-Oct-2022

CI = confidence interval, CR = complete response, HR = hazard ratio, PR = partial response

^a Months, based on Kaplan-Meier estimate.

^b Stratification factors were region, number of metastatic sites, and prior gastrectomy from IRT.

^c Based on a stratified Cox proportional hazards model.

^d Based on a 1-sided stratified log-rank test.

^e Based on confirmed response.

^f Based on binomial distribution (Clopper-Pearson).

TROUBLESHOOTING

1. Section thickness may affect quality and intensity of staining. If staining is inappropriate, contact your local support representative for assistance.
2. Necrotic or autolyzed tissue may exhibit nonspecific staining.
3. If the positive control is negative, tissue may have been improperly collected, fixed, or deparaffinized. Follow the proper procedure for collection, storage, and fixation.
4. If the positive control is negative, check that the slide has the proper barcode label. If the slide is labeled properly, check the other positive controls from the same run to determine if the controls were properly stained.
5. If excessive background staining occurs: incomplete paraffin removal could cause staining artifacts or no staining. If all paraffin is not removed from the slide, repeat the staining run using the extended deparaffinization option, if available.
6. If tissue sections wash off the slide, confirm the slides are positively charged.
7. Extended stay of the slides on the instrument after run completion may affect quality and intensity of the staining. Remove slides promptly at the end of the run and proceed to post-instrument processing.
8. For corrective action, refer to the Instructions for Use section, the instrument User Guide or contact your local support representative.

REFERENCES

1. Hashimoto I, Oshima T. Claudins and gastric cancer: An overview. *Cancers* (Basel). 2022;14(2):290.
2. Singh P, Toom S, Huang Y. Anti-Claudin 18.2 antibody as new targeted therapy for advanced gastric cancer. *J Hematol Oncol*. 2017;10(1):105.
3. Gunzel D, Yu A. Claudin and the modulation of tight junction permeability. *Physiol Rev*. 2013; 93(2):525-69.
4. Selim JH, Shaheen S, Sheu WC, et al. Targeted and novel therapy in advanced gastric cancer. *Exp Hematol Oncol*. 2019; 8:25.
5. Sung H, Ferlay J, Siegel RL, et al. Global Cancer Statistics 2020: GLOBOCAN Estimates of Incidence and Mortality Worldwide for 36 Cancers in 185 Countries. *CA Cancer J Clin*. 2021; 71: 209-249.
6. Ferlay J, Ervik M, Lam F, Colombet M, Mery L, Piñeros M, et al. Global Cancer Observatory: Cancer Today. Lyon: International Agency for Research on Cancer; 2020 (<https://gco.iarc.fr/today>, accessed May 2023).
7. American Cancer Society. Global Cancer Facts & Figures, 4th edition. Atlanta: American Cancer Society; 2018.
8. WHO Classification of Tumours Editorial Board. Digestive system tumours. Lyon (France): International Agency for Research on Cancer; 2019. (WHO classification of tumours series, 5th ed.; vol. 1). <https://publications.iarc.fr/579>.
9. Carson FL, Cappellano C. Histotechnology; A Self-Instructional Text, 5th edition. American Society for Clinical Pathology Press; 2020, 2022.
10. Occupational Safety and Health Standards: Occupational exposure to hazardous chemicals in laboratories. (29 CFR Part 1910.1450). Fed. Register.
11. Directive 2000/54/EC of the European Parliament and Council of 24 June 2020 on the protection of workers from risks related to exposure to biological agents at work.
12. The Human Protein Atlas. <http://www.proteinatlas.org>.
13. Saito T, Matsuda T, Moran D. Claudin 18 isoform expression in gastric adenocarcinoma and pancreatic adenocarcinoma. Poster presented at: World Congress on Gastrointestinal Cancer; June 30 – July 3, 2021; Virtual.
14. Li J, Zhang Y, Hu D, Gong T, Xu R, Gao J. Analysis of the expression and genetic alteration of CLDN18 in gastric cancer. *Aging*. 2020;12(14):14271-14284.
15. Micke P, Mattsson JS, Edlund K, Lohr M, Jirstrom K, Berglund A, et al. Aberrantly activated claudin 6 and 18.2 as potential therapy targets in non-small-cell lung cancer. *Int J Cancer*. 2014;135(9):2206-14.
16. Merikallio H, Pääkkö P, Kinnula VL, Harju T, Soini Y. Claudins 10 and 18 are predominantly expressed in lung adenocarcinomas and in tumors of nonsmokers. *Int J Clin Exp Pathol*. 2011;4(7): 667-73.
17. Sahin U, Koslowski M, Dhaene K, Usener D, Brandenburg G, Seitz G, et al. Claudin-18 splice variant 2 is a pan-cancer target suitable for therapeutic antibody development. *Clin Cancer Res*. 2008;14(23):7624-34.
18. Türeci O, Koslowski M, Helftenbein G, Castle J, Rohde C, Dhaene K, et al. Claudin-18 gene structure, regulation, and expression is evolutionary conserved in mammals. *Gene*. 2011;481(2):83-92.
19. Sanada Y, Oue N, Mitani Y, Yoshida K, et al. Down-regulation of the Claudin-18 gene, identified through serial analysis of gene expression data analysis, in gastric cancer with an intestinal phenotype. *J Pathol*. 2006;208(5):633-42.
20. Shinozaki A, Shibahara J, Noda N, Tanaka M, Aoki T, Kokudo N, et al. Claudin-18 in biliary neoplasms. Its significance in the classification of intrahepatic cholangiocarcinoma. *Virchows Arch*. 2011;459(1):73-80.

NOTE: A point (period/stop) is always used in this document as the decimal separator to mark the border between the integral and the fractional parts of a decimal numeral. Separators for thousands are not used.

Symbols

Ventana uses the following symbols and signs in addition to those listed in the ISO 15223-1 standard (for USA: see elabdoc.roche.com/symbols for more information):



Global Trade Item Number

Rx only

For USA: Caution: Federal law restricts this device to sale by or on the order of a physician.

INTELLECTUAL PROPERTY

VENTANA, BENCHMARK, and OPTIVIEW are trademarks of Roche.

VYLOY™ is a trademark of Astellas Pharma, Inc.

All other product names and trademarks are the property of their respective owners.

© 2024 Ventana Medical Systems, Inc.

For USA: Rx only

CONTACT INFORMATION



Ventana Medical Systems, Inc.
1910 E. Innovation Park Drive
Tucson, AZ 85755
USA
+1 520 887 2155
+1 800 227 2155 (USA)

www.roche.com