

CONFIRM anti-MART-1/melan A (A103) Mouse Monoclonal Primary Antibody

REF	790-2990		50
	05278350001		
REF	790-7272		250
	10348895001		

IVD

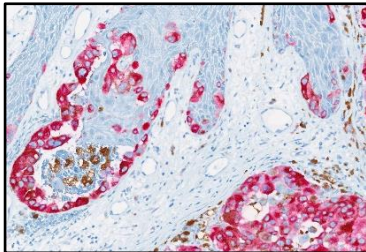


Figure 1. CONFIRM anti-MART-1/melan A (A103) Mouse Monoclonal Primary Antibody cytoplasmic staining of melanoma.

INTENDED USE

CONFIRM anti-MART-1/melan A (A103) Mouse Monoclonal Primary Antibody is intended for laboratory use in the qualitative immunohistochemical detection of melan A by light microscopy in sections of formalin-fixed, paraffin-embedded tissue stained on a BenchMark IHC/ISH instrument.

This product should be interpreted by a qualified pathologist in conjunction with histological examination, relevant clinical information, and proper controls.

This antibody is intended for in vitro diagnostic (IVD) use.

SUMMARY AND EXPLANATION

Detection of melan A protein by immunohistochemistry (IHC) with the CONFIRM anti-MART-1/melan A (A103) antibody may be used as a melanocyte marker to aid in the differential diagnosis of melanocytic versus non-melanocytic tumors. It may be used as part of a panel of IHC studies. The staining pattern is cytoplasmic.

Melan A, also known as melanoma antigen recognized by T-cells-1 (MART-1), is an ~18 kDa single-domain transmembrane protein that encodes a polypeptide of 118 amino acids. Melan A is located mainly in endoplasmic reticulum, melanosomes, and the trans-Golgi network.^{1,2} In normal human cells and tissues, melan A mRNA is expressed exclusively in melanocytes of the skin and retina.^{3,4} Neoplasms derived from these cell types also express melan A, such as primary and metastatic melanomas.

Although melan A function is not fully elucidated, it is known to play an essential role in regulating pigmentation. Melan A forms a complex with premelanosome protein (PMEL), a protein essential in the formation of early melanosomes.⁵ Melan A impacts PMEL expression, stability, trafficking, and processing, which is required for melanosome structure and maturation.⁵

PRINCIPLE OF THE PROCEDURE

CONFIRM anti-MART-1/melan A (A103) antibody binds to the melan A protein in formalin-fixed, paraffin-embedded (FFPE) tissue sections. This antibody can be visualized using OptiView DAB IHC Detection Kit (Cat. No. 760-700 / 06396500001) or *ultraView* Universal Alkaline Phosphatase Red Detection Kit (Cat. No. 760-501 / 05269814001). Refer to the respective method sheet for further information.

MATERIAL PROVIDED

CONFIRM anti-MART-1/melan A (A103) antibody (790-2990) contains sufficient reagent for 50 slides.

One 5 mL dispenser of CONFIRM anti-MART-1/melan A (A103) antibody contains approximately 11.5 µg of a mouse monoclonal antibody.

CONFIRM anti-MART-1/melan A (A103) antibody (790-7272) contains sufficient reagent for 250 slides.

One 25 mL dispenser of CONFIRM anti-MART-1/melan A (A103) antibody contains approximately 57.5 µg of a mouse monoclonal antibody.

The antibody is diluted in 0.05 M Tris-HCl buffer with carrier protein, and 0.10% ProClin 300, a preservative.

Specific antibody concentration is approximately 2.3 µg/mL. There is no known irrelevant antibody reactivity observed in this product.

CONFIRM anti-MART-1/melan A (A103) antibody is a recombinant mouse monoclonal antibody produced as a purified cell culture supernatant.

Refer to the appropriate VENTANA detection kit method sheet for detailed descriptions of Principle of the Procedure, Material and Methods, Specimen Collection and Preparation for Analysis, Quality Control Procedures, Troubleshooting, Interpretation of Results, and Limitations.

MATERIALS REQUIRED BUT NOT PROVIDED

Staining reagents, such as VENTANA detection kits and ancillary components, including negative and positive tissue control slides, are not provided.

Not all products listed in the method sheet may be available in all geographies. Consult your local support representative.

The following reagents and materials may be required for staining but are not provided:

1. Recommended control tissue
2. Microscope slides, positively charged
3. Negative Control (Monoclonal) (Cat. No. 760-2014 / 05266670001)
4. OptiView DAB IHC Detection Kit (Cat. No. 760-700 / 06396500001)
5. *ultraView* Universal Alkaline Phosphatase Red Detection Kit (Cat. No. 760-501 / 05269814001)
6. Amplification Kit (Cat. No. 760-080 / 05266114001)
7. VENTANA Antibody Diluent with Casein (Cat. No. 760-219 / 06440002001)
8. EZ Prep Concentrate (10X) (Cat. No. 950-102 / 05279771001)
9. Reaction Buffer Concentrate (10X) (Cat. No. 950-300 / 05353955001)
10. LCS (Predilute) (Cat. No. 650-010 / 05264839001)
11. ULTRA LCS (Predilute) (Cat. No. 650-210 / 05424534001)
12. Cell Conditioning Solution (CC1) (Cat. No. 950-124 / 05279801001)
13. ULTRA Cell Conditioning Solution (ULTRA CC1) (Cat. No. 950-224 / 05424569001)
14. Hematoxylin II (Cat. No. 790-2208 / 05277965001)
15. Bluing Reagent (Cat. No. 760-2037 / 05266769001)
16. General purpose laboratory equipment
17. BenchMark IHC/ISH instrument

STORAGE AND STABILITY

Upon receipt and when not in use, store at 2-8°C. Do not freeze.

To ensure proper reagent delivery and the stability of the antibody, replace the dispenser cap after every use and immediately place the dispenser in the refrigerator in an upright position.

Every antibody dispenser is expiration dated. When properly stored, the reagent is stable to the date indicated on the label. Do not use reagent beyond the expiration date.

SPECIMEN PREPARATION

Routinely processed FFPE tissues are suitable for use with this primary antibody when used with VENTANA detection kits and BenchMark IHC/ISH instruments. The recommended tissue fixative is 10% neutral buffered formalin.⁶ Sections should be cut at approximately 4 µm in thickness and mounted on positively charged slides. Slides should be stained immediately, as antigenicity of cut tissue sections may diminish over time. Ask your Roche representative for a copy of "Recommended Slide Storage and Handling" for more information.

It is recommended that positive and negative controls be run simultaneously with unknown specimens.

WARNINGS AND PRECAUTIONS

1. For in vitro diagnostic (IVD) use.
2. For professional use only.
3. Do not use beyond the specified number of tests.
4. ProClin 300 solution is used as a preservative in this reagent. It is classified as an irritant and may cause sensitization through skin contact. Take reasonable precautions when handling. Avoid contact of reagents with eyes, skin, and mucous membranes. Use protective clothing and gloves.

5. Positively charged slides may be susceptible to environmental stresses resulting in inappropriate staining. Ask your Roche representative for more information on how to use these types of slides.
6. Materials of human or animal origin should be handled as biohazardous materials and disposed of with proper precautions. In the event of exposure, the health directives of the responsible authorities should be followed.^{7,8}
7. Avoid contact of reagents with eyes and mucous membranes. If reagents come in contact with sensitive areas, wash with copious amounts of water.
8. Avoid microbial contamination of reagents as it may cause incorrect results.
9. For further information on the use of this device, refer to the BenchMark IHC/ISH instrument User Guide, and instructions for use of all necessary components located at navifyportal.roche.com.
10. Consult local and/or state authorities with regard to recommended method of disposal.
11. Product safety labeling primarily follows EU GHS guidance. Safety data sheet available for professional user on request.
12. To report suspected serious incidents related to this device, contact the local Roche representative and the competent authority of the Member State or Country in which the user is established.

This product contains components classified as follows in accordance with the Regulation (EC) No. 1272/2008:

Table 1. Hazard information.

Hazard	Code	Statement
	H317	May cause an allergic skin reaction.
	H412	Harmful to aquatic life with long lasting effects.
	P261	Avoid breathing mist or vapours.
	P273	Avoid release to the environment.
	P280	Wear protective gloves.
	P333 + P313	If skin irritation or rash occurs: Get medical advice/attention.
	P362 + P364	Take off contaminated clothing and wash it before reuse.
	P501	Dispose of contents/ container to an approved waste disposal plant.

This product contains CAS # 55965-84-9, a reaction mass of: 5-chloro-2-methyl-2H-isothiazol-3-one and 2-methyl-2H-isothiazol-3-one (3:1).

STAINING PROCEDURE

VENTANA primary antibodies have been developed for use on BenchMark IHC/ISH instruments in combination with VENTANA detection kits and accessories. Refer to the tables below for recommended staining protocols.

This antibody has been optimized for specific incubation times but the user must validate results obtained with this reagent.

The parameters for the automated procedures can be displayed, printed and edited according to the procedure in the instrument User Guide. Refer to the appropriate VENTANA detection kit method sheet for more details regarding immunohistochemistry staining procedures.

For more details on the proper use of this device, refer to the inline dispenser method sheet associated with P/N 790-2990 and P/N 790-7272.

Table 2. Recommended staining protocol for CONFIRM anti-MART-1/melan A (A103) antibody with OptiView DAB IHC Detection Kit on BenchMark IHC/ISH instruments.

Procedure Type	Method	
	GX	ULTRA or ULTRA PLUS ^a
Deparaffinization	Selected	Selected
Cell Conditioning (Antigen Unmasking)	CC1, 64 minutes	ULTRA CC1, 64 minutes, 98°C

Procedure Type	Method	
	GX	ULTRA or ULTRA PLUS ^a
Pre Primary Peroxidase Inhibitor	Selected	Selected
Antibody (Primary)	32 minutes, 37°C	32 minutes, 36°C
OptiView HQ Linker	8 minutes (default)	
OptiView HRP Multimer	8 minutes (default)	
Counterstain	Hematoxylin II, 4 minutes	
Post Counterstain	Bluing, 4 minutes	

^a Concordance was demonstrated between BenchMark ULTRA and BenchMark ULTRA PLUS instruments using representative assays.

Table 3. Recommended staining protocol for CONFIRM anti-MART-1/melan A (A103) antibody with *ultraView* Universal Alkaline Phosphatase Red Detection Kit on BenchMark IHC/ISH instruments.

Procedure Type	Method	
	GX	ULTRA or ULTRA PLUS ^a
Deparaffinization	Selected	Selected
Cell Conditioning (Antigen Unmasking)	CC1, Standard	ULTRA CC1, 76 minutes, 95°C
Antibody (Primary)	28 minutes, 37°C	32 minutes, 36°C
Amplification	Selected	Selected
ultraBlock ^b	8 minutes	8 minutes
Counterstain	Hematoxylin II, 4 minutes	
Post Counterstain	Bluing, 4 minutes	

^a Concordance was demonstrated between BenchMark ULTRA and BenchMark ULTRA PLUS instruments using representative assays.

^b Use of VENTANA Antibody Diluent with Casein at the ultraBlock step.

Due to variation in tissue fixation and processing, as well as general lab instrument and environmental conditions, it may be necessary to increase or decrease the primary antibody incubation, cell conditioning or protease pretreatment based on individual specimens, detection used, and reader preference. For further information on fixation variables, refer to "Immunohistochemistry Principles and Advances."⁹

NEGATIVE REAGENT CONTROL

In addition to staining with CONFIRM anti-MART-1/melan A (A103) antibody, a second slide should be stained with the appropriate negative control reagent.

POSITIVE TISSUE CONTROL

A tissue control must be included with each staining run. Optimal laboratory practice is to include a positive control section on the same slide as the test tissue. This helps identify any failures applying reagents to the slide. Tissue with weak positive staining is best suited for quality control. Control tissue may contain both positive and negative staining elements and serve as both the positive and negative control. Control tissue should be fresh autopsy, biopsy, or surgical specimen, prepared or fixed as soon as possible in a manner identical to test sections.

Known positive tissue controls should be utilized only for monitoring performance of reagents and instruments, not as an aid in determining specific diagnosis of test samples. If the positive tissue controls fail to demonstrate positive staining, results of the test specimen should be considered invalid.

An example of positive control tissue for CONFIRM anti-MART-1/melan A (A103) antibody is melanocyte staining in normal skin or melanoma (as depicted in the above image).

STAINING INTERPRETATION / EXPECTED RESULTS

The cellular staining pattern for CONFIRM anti-MART-1/melan A (A103) antibody is cytoplasmic.

SPECIFIC LIMITATIONS

OptiView Detection system is generally more sensitive than *ultra*View Detection system. The user must validate results obtained with this reagent.

All assays might not be registered on every instrument. Please contact your local Roche representative for more information.

PERFORMANCE CHARACTERISTICS

ANALYTICAL PERFORMANCE

Staining tests for sensitivity, specificity, and precision were conducted and the results are listed below.

Sensitivity and Specificity

Table 4. Sensitivity/Specificity of CONFIRM anti-MART-1/melan A (A103) antibody was determined by testing formalin-fixed, paraffin-embedded normal tissues.

Tissue	# positive / total cases	Tissue	# positive / total cases
Cerebrum	0/3	Stomach	0/3
Cerebellum	0/3	Small intestine	0/3
Adrenal gland ^{a, c}	17/21	Colon	0/3
Ovary	0/3	Liver	0/3
Pancreas	0/3	Salivary gland	0/3
Parathyroid gland	0/3	Kidney	0/3
Pituitary gland	0/3	Prostate	0/3
Testis ^b	3/3	Bladder	0/3
Thyroid	0/3	Endometrium	0/3
Breast	0/3	Uterus	0/6
Spleen	0/3	Placenta	0/3
Tonsil	0/3	Cervix	0/5
Thymus	0/3	Skeletal muscle	0/6
Bone marrow	0/3	Smooth muscle	0/1
Lung	0/3	Skin	13/13
Heart	0/3	Nerve	0/6
Esophagus	0/3	Mesothelium	0/6

^a Adrenal cortical cells staining

^b Leydig and Sertoli cells staining

^c Tissues evaluated include normal and hyperplastic adrenal gland

Table 5. Sensitivity/Specificity of CONFIRM anti-MART-1/melan A (A103) antibody was determined by testing a variety of formalin-fixed, paraffin-embedded neoplastic tissues.

Pathology	# positive / total cases
Glioblastoma (Cerebrum)	0/4
Adrenal cortical adenocarcinoma (Adrenal gland)	4/10
Adrenal cortical adenoma (Adrenal gland)	34/35
Ganglioneuroma (Adrenal gland)	0/1

Pathology	# positive / total cases
Neuroblastoma (Adrenal gland)	0/3
Pheochromocytoma (Adrenal gland)	1/31
Endometrioid adenocarcinoma (Ovary)	0/1
Mucinous adenocarcinoma (Ovary)	0/1
Neuroendocrine neoplasm (Pancreas)	0/1
Ductal adenocarcinoma (Pancreas)	0/1
Embryonal rhabdomyosarcoma (Head and neck)	0/1
Embryonal carcinoma (Testis)	0/1
Seminoma (Testis)	0/1
Medullary carcinoma (Thyroid)	0/1
Papillary carcinoma (Thyroid)	0/1
Ductal carcinoma in situ (Breast)	0/1
Invasive carcinoma of no special type (Breast)	0/2
Osteosarcoma (Bone)	0/1
Adenosquamous carcinoma (Lung)	0/1
Small cell carcinoma (Lung)	0/2
Adenocarcinoma (Esophagus)	0/1
Squamous cell carcinoma (Esophagus)	0/1
Adenocarcinoma (Stomach)	0/1
Adenocarcinoma (Small intestine)	0/1
Gastrointestinal stromal tumors, GIST (Small intestine)	0/1
Adenocarcinoma (Colon)	0/1
Gastrointestinal stromal tumors, GIST (Colon)	0/1
Adenocarcinoma (Rectum)	0/1
Gastrointestinal stromal tumors, GIST (Rectum)	0/1
Hepatoblastoma (Liver)	0/1
Hepatocellular carcinoma (Liver)	0/1
Angiomyolipoma (Kidney)	10/10
Clear cell carcinoma (Kidney)	0/1
Adenocarcinoma (Prostate)	0/2
Invasive low grade urothelial carcinoma (Bladder)	0/1
Leiomyosarcoma (Bladder) ^a	1/1
Clear cell carcinoma (Uterus)	0/1
Endometrioid adenocarcinoma (Uterus)	0/1
Epithelioid leiomyosarcoma (Uterus) ^a	1/1
Squamous cell carcinoma (Cervix)	0/2
Spindle cell rhabdomyosarcoma (Pelvic cavity)	0/1
Leiomyosarcoma (Broad ligament)	0/1
Neurofibroma (Soft tissue)	0/1
Basal cell carcinoma (Skin)	0/8
Squamous cell carcinoma (Skin)	0/8
Nevus (Skin)	8/8

Pathology	# positive / total cases
Compound nevus (Skin)	2/2
Intradermal nevus (Skin)	1/1
Melanoma ^b	51/56
Metastatic melanoma ^c	55/56
Neuroblastoma (Retroperitoneum)	0/1
Mesothelioma (Pericardium)	0/1
Anaplastic large cell lymphoma	0/1
B-cell lymphoma, NOS	0/3
Hodgkin Lymphoma	0/1

^a Tumor cells of leiomyosarcoma; ^b Includes skin, rectum, chest wall, vulva, eye, anus, testis, vagina tissue; ^c Includes lymph node, liver, mediastinum, brain, parotid, soft tissue, and ear tissue

Precision

Precision studies for CONFIRM anti-MART-1/melan A (A103) antibody were completed to demonstrate:

- Between lot precision of the antibody.
- Within run and between day precision on a BenchMark ULTRA instrument.
- Between instrument precision on the BenchMark GX, BenchMark ULTRA / ULTRA PLUS instrument.
- Between platform precision between the BenchMark GX, BenchMark ULTRA / ULTRA PLUS instrument.

All studies met their acceptance criteria.

Precision on the BenchMark ULTRA PLUS instrument was demonstrated using representative assays. Studies included Within-run Repeatability, Between-day and Between-run Intermediate Precision. All studies met their acceptance criteria.

CLINICAL PERFORMANCE

Clinical performance data relevant to the intended purpose of CONFIRM anti-MART-1/melan A (A103) antibody were assessed by systematic review of the literature. The data gathered support the use of the device in accordance with its intended purpose.

REFERENCES

1. De Maziere AM, Muehlethaler K, van Donselaar E, et al. The melanocytic protein Melan-A/MART-1 has a subcellular localization distinct from typical melanosomal proteins. *Traffic*. 2002;3(9):678-693.
2. Rimoldi D, Muehlethaler K, Salvi S, et al. Subcellular localization of the melanoma-associated protein Melan-AMART-1 influences the processing of its HLA-A2-restricted epitope. *J Biol Chem*. 2001;276(46):43189-43196.
3. Coulie PG, Brichard V, Van Pel A, et al. A new gene coding for a differentiation antigen recognized by autologous cytolytic T lymphocytes on HLA-A2 melanomas. *J Exp Med*. 1994;180(1):35-42.
4. Kawakami Y, Eliyahu S, Delgado CH, et al. Identification of a human melanoma antigen recognized by tumor-infiltrating lymphocytes associated with in vivo tumor rejection. *Proc Natl Acad Sci U S A*. 1994;91(14):6458-6462.
5. Hoashi T, Watabe H, Muller J, Yamaguchi Y, Vieira WD, Hearing VJ. MART-1 is required for the function of the melanosomal matrix protein PMEL17/GP100 and the maturation of melanosomes. *J Biol Chem*. 2005;280(14):14006-14016.
6. Sheehan DC, Hrapchak BB. *Theory and Practice of Histotechnology*, 2nd Edition. St. Louis, MO: The C.V. Mosby Company; 1980.
7. Occupational Safety and Health Standards: Occupational exposure to hazardous chemicals in laboratories. (29 CFR Part 1910.1450). Fed. Register.
8. Directive 2000/54/EC of the European Parliament and Council of 24 June 2000 on the protection of workers from risks related to exposure to biological agents at work.
9. Roche PC, Hsi ED. *Immunohistochemistry-Principles and Advances*. Manual of Clinical Laboratory Immunology, 6th edition. In: NR Rose, ed. ASM Press; 2002.

NOTE: A point (period/stop) is always used in this document as the decimal separator to mark the border between the integral and the fractional parts of a decimal numeral. Separators for thousands are not used.

The summary of safety and performance can be found here:

<https://ec.europa.eu/tools/eudamed>

Symbols

Ventana uses the following symbols and signs in addition to those listed in the ISO 15223-1 standard (for USA: see elabdoc.roche.com/symbols for more information).



Global Trade Item Number

Rx only

For USA: Caution: Federal law restricts this device to sale by or on the order of a physician.

REVISION HISTORY

Rev	Updates
G	Updates to Summary and Explanation, Material Provided, Materials Required but not Provided, Warnings and Precautions, Positive Tissue Control, Analytical Performance, References, Symbols, and Intellectual Property sections.

INTELLECTUAL PROPERTY

VENTANA, BENCHMARK, CONFIRM, OPTIVIEW, and ULTRAVIEW are trademarks of Roche. All other product names and trademarks are the property of their respective owners.

© 2025 Ventana Medical Systems, Inc.

For USA: Rx only

CONTACT INFORMATION



Ventana Medical Systems, Inc.
1910 E. Innovation Park Drive
Tucson, AZ 85755
USA

+1 520 887 2155
+1 800 227 2155 (USA)

www.roche.com



Roche Diagnostics GmbH
Sandhofer Strasse 116
68305 Mannheim
Germany
+800 5505 6606

